



GAT MONTHLY MEMBERSHIP PROGRESS REPORT

Results as of: 10/31/2021

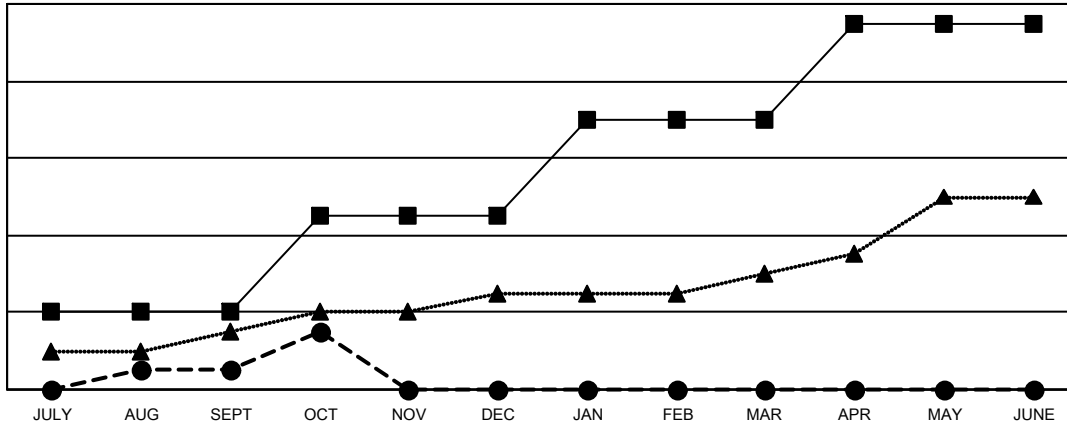
Multiple District 411

LOCATION: KENYA AFRICA

Clubs			
RESULTS FOR 2021-2022			
QUARTER	NEW CLUB GOAL	NEW CLUBS	DROPPED CLUBS
JULY/AUG/SEPT	4	1	2
OCT/NOV/DEC	5	2	0
JAN/FEB/MAR	5	0	0
APR/MAY/JUNE	5	0	0

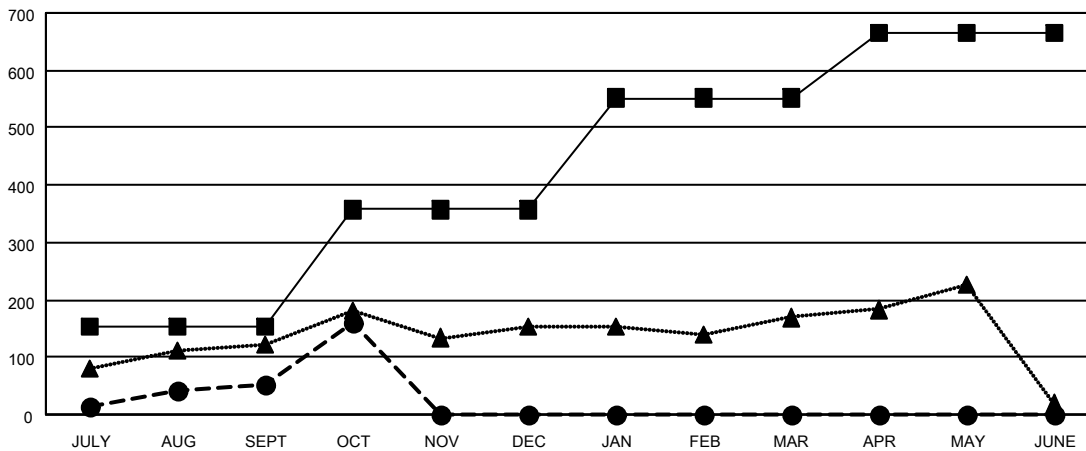
Members			
RESULTS FOR 2021-2022			
QUARTER	MEMBER GROWTH NET GOAL	MEMBER GROWTH ACTUAL	DROPPED MEMBERS ACTUAL (including transfers)
JULY/AUG/SEPT	152	195	134
OCT/NOV/DEC	205	131	23
JAN/FEB/MAR	195	0	0
APR/MAY/JUNE	112	0	0

GOALS AND ACTUAL NEW CLUBS CUMULATIVE



- CURRENT YEAR GOALS FOR NEW CLUBS
- CURRENT YEAR ACTUAL NEW CLUBS
- ▲- LAST YEAR ACTUAL NEW CLUBS

GOALS AND ACTUAL MEMBERS CUMULATIVE



- MEMBER GROWTH NET GOAL
- MEMBER GROWTH ACTUAL
- ▲- LAST YEAR MEMBERSHIP ACTUAL

DROPPED CLUBS: 2	
DROPPED MEMBERS	
DECEASED	12
CLUB CANCELLED	28
OTHER	117
TOTAL	157

59 CLUBS OF 140 ADDED 1 OR MORE NEW MEMBERS

[CLICK HERE FOR CUMULATIVE MEMBERSHIP DATA](#)

GENDER DISTRIBUTION	
MALE	2,423 (62.74%)
FEMALE	1,435 (37.16%)
NON BINARY	0 (0.00%)
PREFER NOT TO ANSWER	4 (0.10%)
TOTAL FAMILY UNIT MEMBERS	1,072
FAMILY MEMBERS PAYING HALF DUES	637